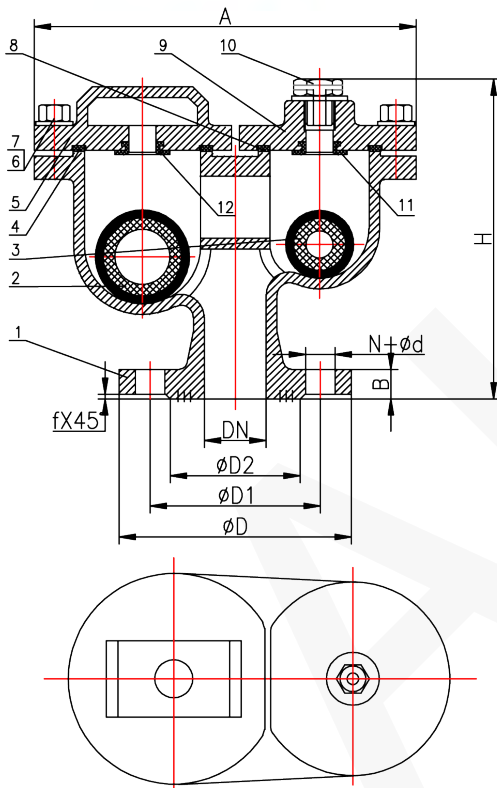


DOUBLE SPHERE AIR VALVE - FLANGE TYPE MODEL FIG073



PRODUCTION STANDARDS

MODEL FIG073 | DN40 - DN200
PN10 - PN16

Design	ISO Standard
Face to Face	API 609, BS EN558, DIN3202
Flange	ANSI B16.5/BS 4504/EN 1092-2

MATERIAL SELECTION

No	Name	Qty	Material
1	Body	1	GGG50
2	Floating Ball 1	1	ABS OR EPDM
3	Floating Ball 2	1	ABS OR EPDM
4	Sealing	1	NBR/EPDM
5	Seal Cover	1	GGG50
6	Screw	6	SS201
7	Gasket	6	SS201
8	Sealing	1	NBR/EPDM
9	Seal Cover	1	GGG50
10	Air Relief	1	GALVANIZE
11	Seal Seat	1	NBR/EPDM
12	Seal Seat	1	NBR/EPDM

Performance Specification

Nominal Pressure	1.6MPa	2.5MPa
Suitable Medium	Water	
Test Pressure Shell	24.0 Bar	37.5 Bar
Test Pressure Seat	17.6 Bar	27.5 Bar
Working Pressure	≤ 80°C	

DIMENSIONS

DN	A	ØD		ØD1		ØD2		f	N-Ød		B		H
		PN16	PN25	PN16	PN25	PN16	PN25		PN16	PN25	PN16	PN25	
DN40	250	Ø150	Ø150	Ø110	Ø110	Ø84	Ø84	3	4-Ø19	4-Ø19	19	19	208
DN50	250	Ø165	Ø165	Ø125	Ø125	Ø99	Ø99	3	4-Ø19	4-Ø19	19	19	208
DN65	250	Ø185	Ø185	Ø145	Ø145	Ø118	Ø118	3	4-Ø19	8-Ø19	19	19	208
DN80	325	Ø200	Ø200	Ø160	Ø160	Ø132	Ø132	3	8-Ø19	8-Ø19	19	19	250
DN100	325	Ø220	Ø235	Ø180	Ø190	Ø154	Ø156	3	8-Ø19	8-Ø23	19	19	250
DN125	440	Ø250	Ø270	Ø210	Ø220	Ø184	Ø188	3	8-Ø19	8-Ø28	19	19	344
DN150	440	Ø285	Ø300	Ø240	Ø250	Ø210	Ø218	3	8-Ø23	8-Ø28	19	20	344
DN200	612	Ø340	Ø360	Ø295	Ø310	Ø265	Ø274	3	12-Ø23	12-Ø28	20	22	468